

DETAIL-A TRASH & STAGING PLAN

SCALE: 1/4"=1'-0"

TRASH NOTES

- TRASH REMOVAL IS PROPOSED 2 TIMES A WEEK TO ACCOMMODATE THE SIZE OF THE TRASH ROOM AND BINS NEEDED PER WEEK.
- TRASH CUTES TO HAVE LOCKING MECHANISM TO BE SECURELY CLOSED AT GROUND LEVEL WHILE BINS ARE REMOVED.
- TRASH STAGING AREA & PATH OF BIN TRAVEL TO BE SMOOTH, FLAT, CONCRETE SURFACE.
- OVERHEAD CLEARANCE MIN. 22'
- NO PATH OF TRAVEL

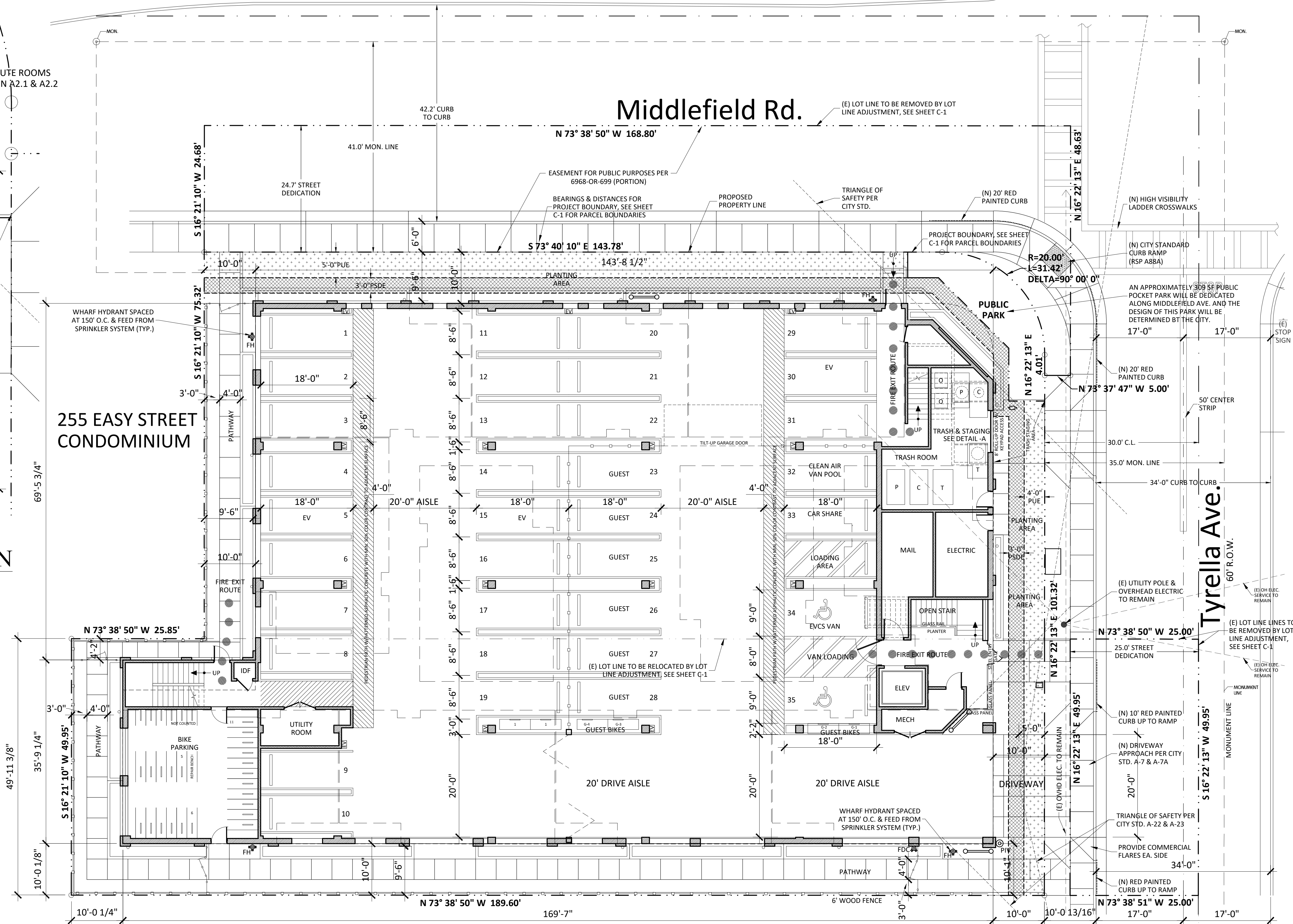
LEGEND

- PROJECT BOUNDARY
- LOT LINE
- VERTICAL CURB & GUTTER
- VERTICAL CURB
- PERIMETER FENCE
- RAIN GARDEN BIO-RETENTION BASIN
- (E) TREE TO REMAIN
- WHARF HYDRANT
- FIRE DEPARTMENT CONNECTION
- POST INDICATOR VALVE

- P: PAPER
- T: TRASH
- O: ORGANICS
- C: CONTAINERS

294 & 296 TYRELLA AVE
OAK CREEK TERRACE

APN# 160-32-001 & 160-32-002



SITE PLAN NOTES

- FOR EASEMENTS, LOT DIMENSIONS, AND LOT SIZES, SEE SHEET C-1
- BUILDING INTENDED USE IS PRIMARILY RESIDENTIAL. SEE SHEET A.01 FOR OCCUPANCY USES BY FLOOR
- SEE SHEET A.02 FOR NEIGHBORHOOD CONTEXT

SITE PLAN

SITE PLAN

DATE: 11-10-2022

785 CASTRO STREET
MOUNTAIN VIEW, CA 94041

C-3

Berry and Associates
Civil Engineer

