

# Villa Mini Park Community Meeting 1

August 23, 2022



City of Mountain View  
Public Works Department



City of  
Mountain View

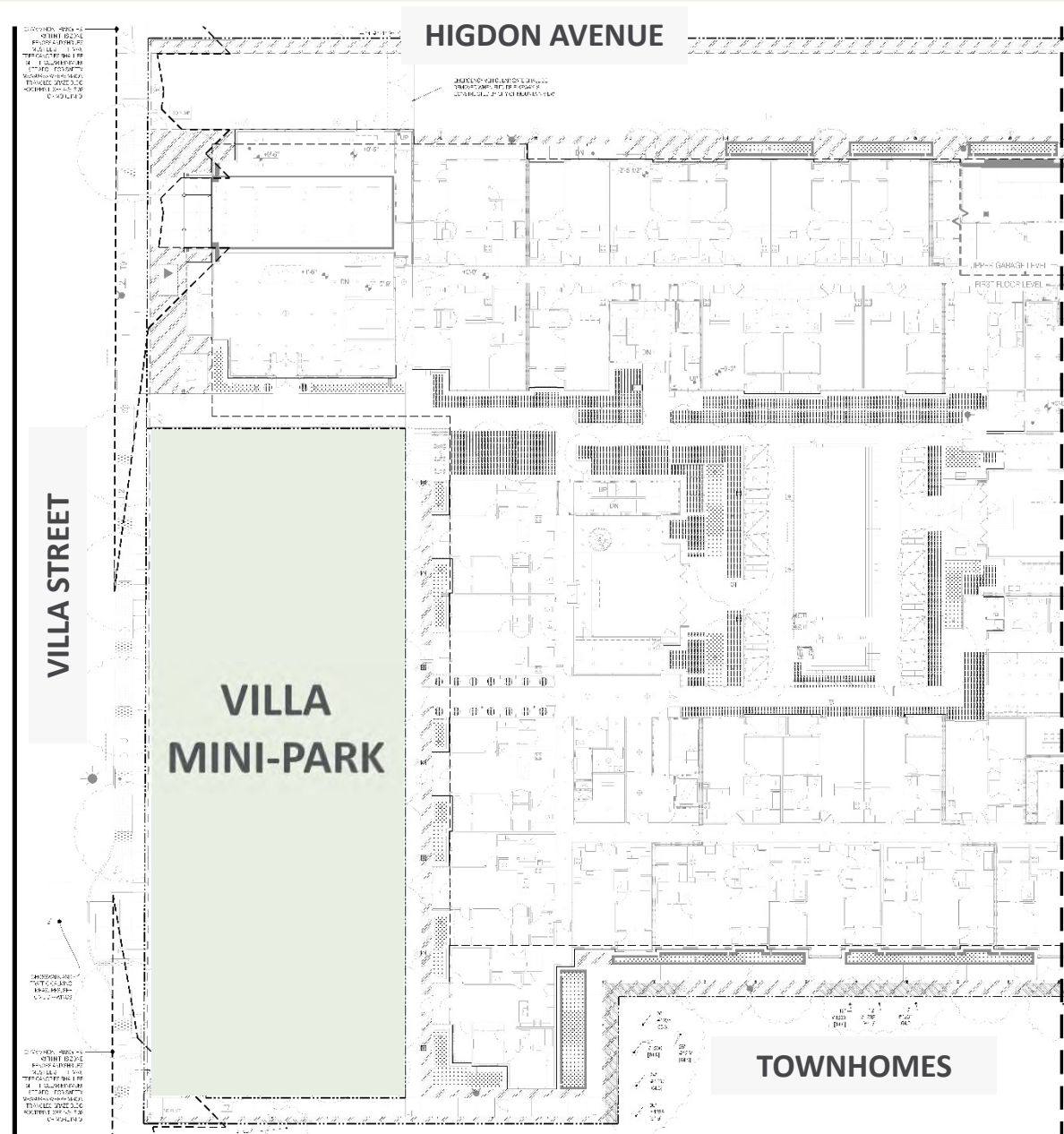


# INTRODUCTIONS: City of Mountain View

Faryal Saiidnia  
John Marchant  
Brenda Sylvia  
Tim Youngberg

## SSA Landscape Architects

Steve Sutherland  
Briana Cox  
Emily Izenson





# WHY ARE WE HERE TODAY?

- To give the community an overview of the project.
- To obtain community input on park amenities.
- To hear from the community about what they envision for the new park.



# DESIGNATED CONSTRUCTION BUDGET:

\$1.7 million with 2% of budget devoted to public art

## PROCESS:

### Community Outreach

- Meeting #1 – August 23, 2022
- Meeting #2 – Oct/Nov 2022

### Conceptual Design and Park Name Approvals

- Parks and Recreation Commission on Nov/Dec 2022
- City Council Presentation on Dec 2022/Jan 2023

### Design

- Construction Documents: Winter 2022-Spring 2023

### Bid Period

- Summer 2023

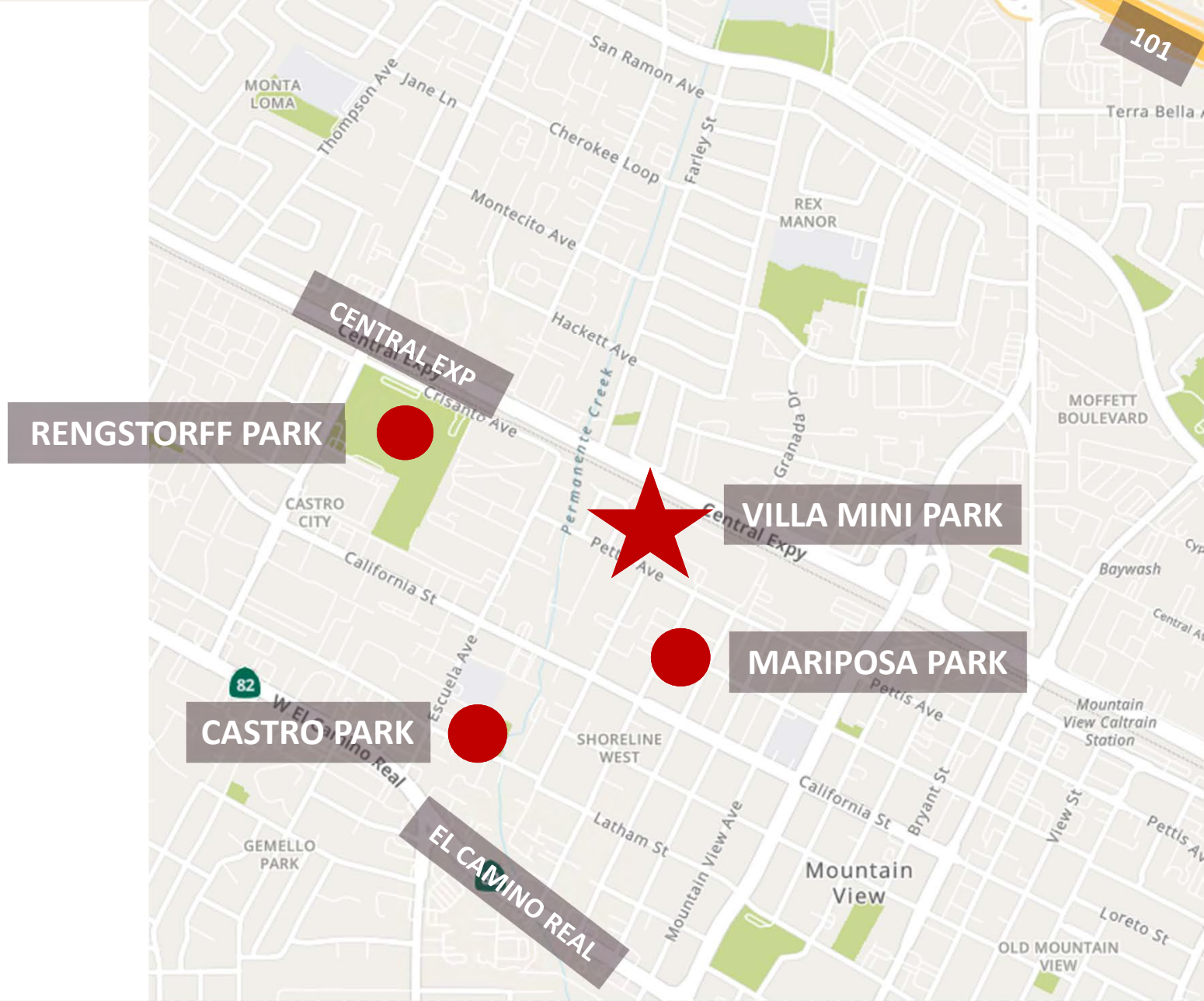
### Construction

- Summer 2023-Spring 2024

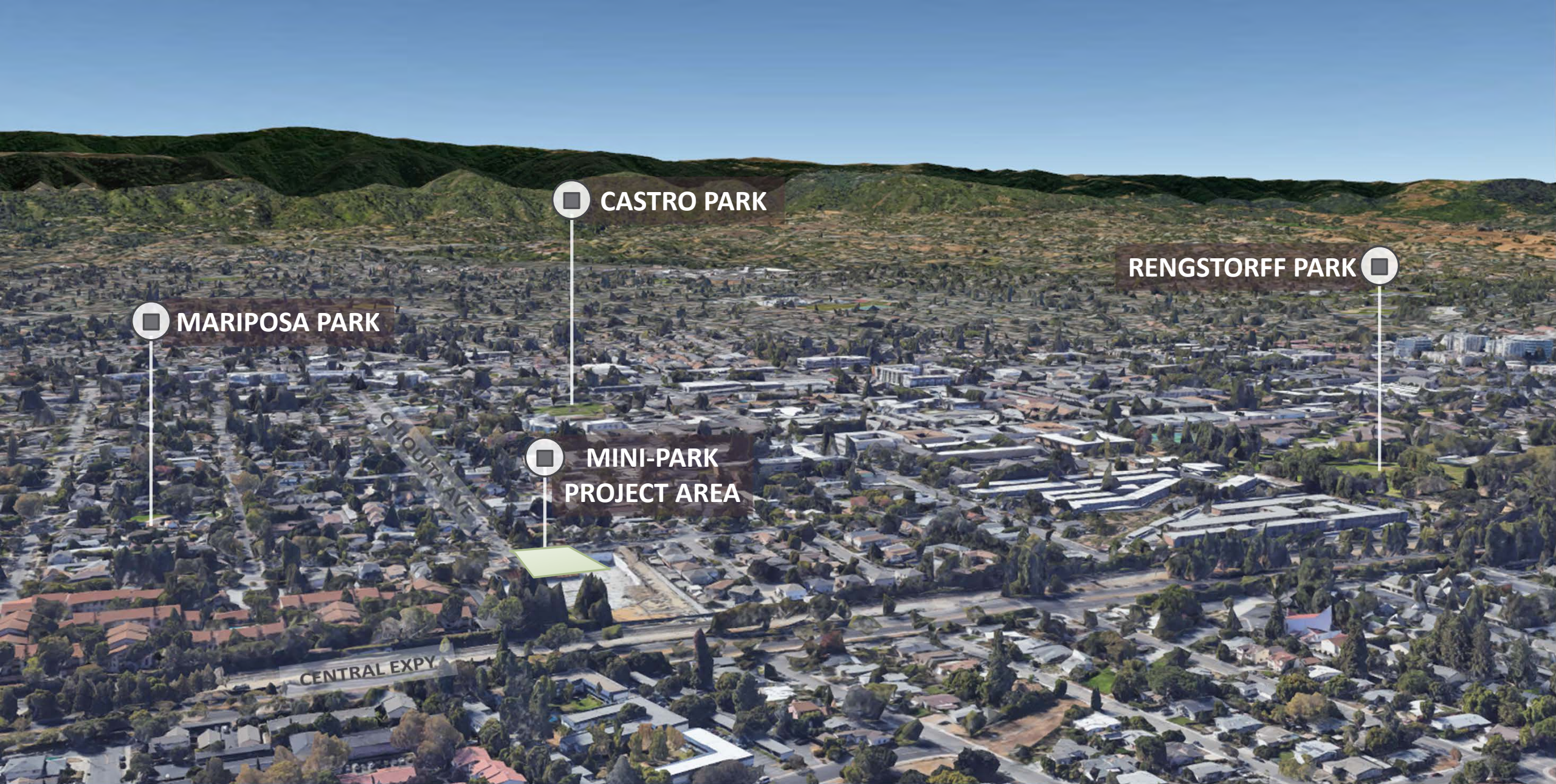


# LOCATION:

- Rengstorff Park, Castro Park, and Mariposa Park are closest in proximity.





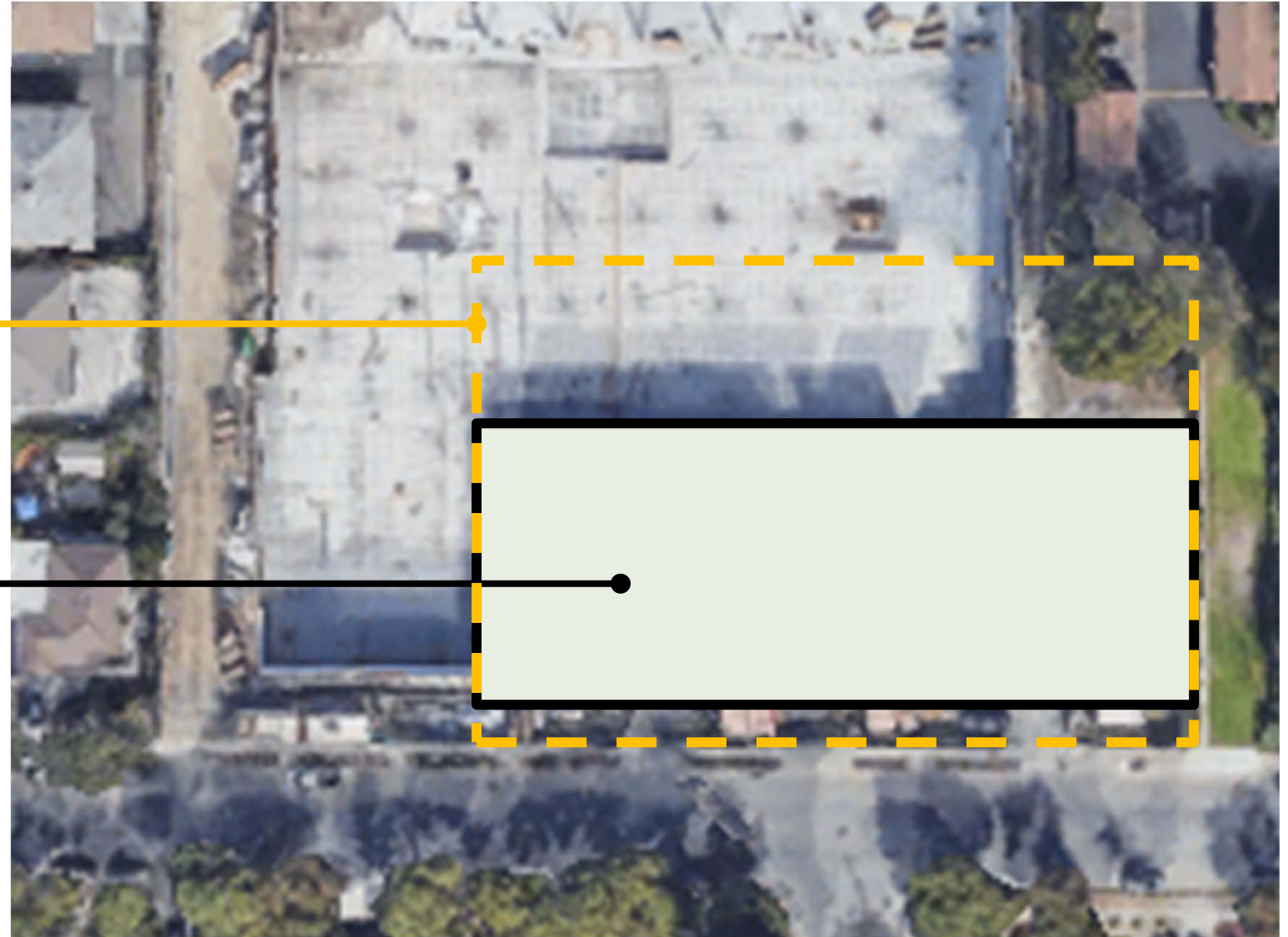




# FOR COMPARISON

MARIPOSA PARK  
Approx. 29,000sf

VILLA MINI  
PARK SITE  
Approx. 17,000sf











## SITE CHARACTERISTICS:

### VILLA MINI-PARK

- Close to 17,000 square feet in size
- Relatively Flat open space
- Potential access on all sides of the property
- New perimeter fence-opportunity as needed for safety

SIDEWALK

Villa Street

CROSS  
WALK

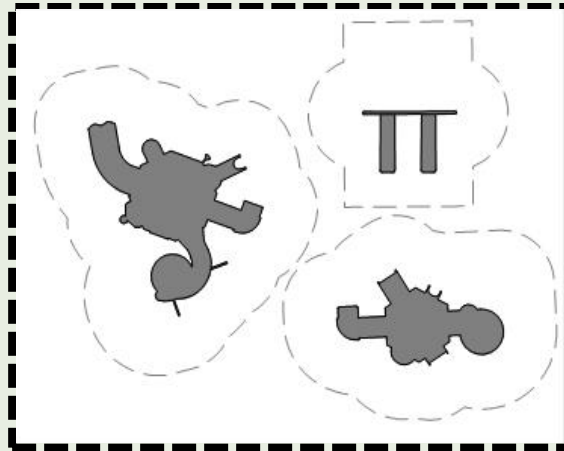
# AMENITIES FOR CONSIDERATION:

- Open Grass Area
- Play Equipment
- Fitness Stations
- Seating & Picnic Areas
- Pathways
- Shade Structure
- Half Court Basketball
- Entry Plaza
- Drinking Fountain
- Planting/Trees/Landscaping





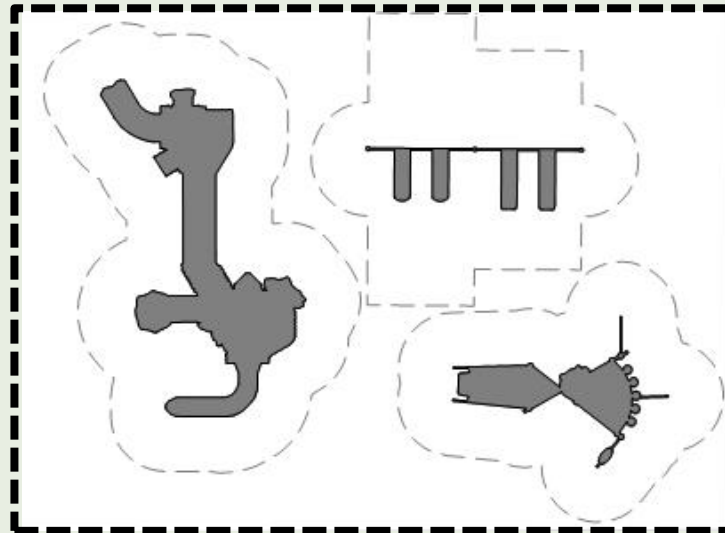
TOWNHOMES



PLAY AREA  
3000 S.F.

VILLA STREET

TOWNHOMES



PLAY AREA  
4500 S.F.

VILLA STREET

# Two ways to participate in our survey:



## Interactive computer polling

Free WiFi network is available  
cmvwifi

## Written response

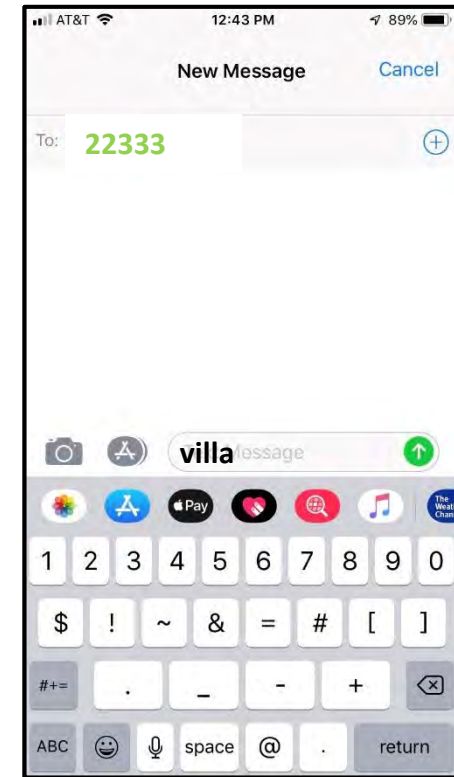


# To participate in interactive computer polling:



Website:  
[www.pollev.com/villa](http://www.pollev.com/villa)

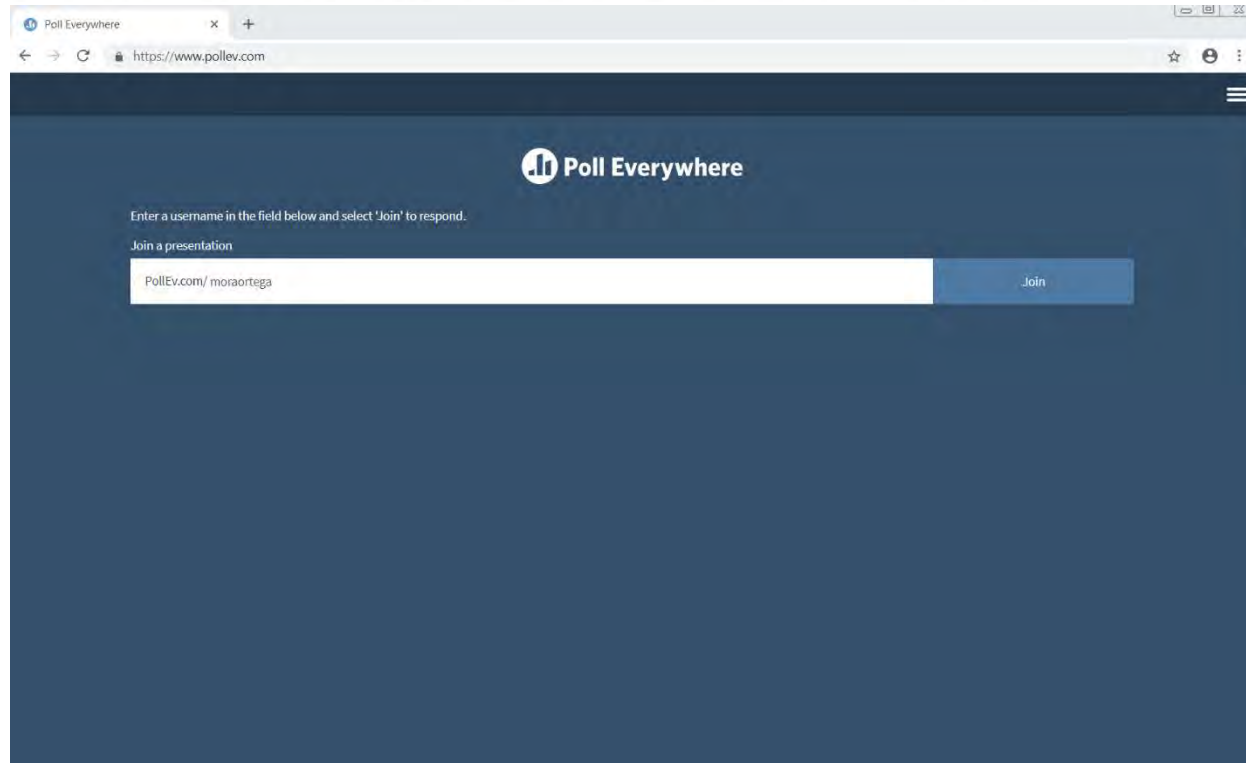
OR



Text Message:  
"villa" to 22333

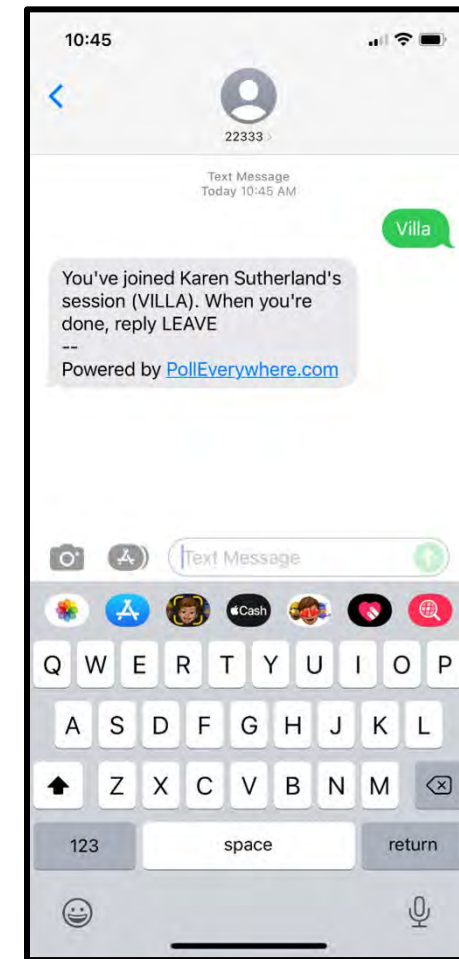
standard messaging rates apply

# What you will see next:



Website:  
[www.pollev.com/villa](https://www.pollev.com/villa)

OR



Text Message:  
"villa" to 22333

standard messaging rates apply

# What is the most important park feature to you?

- Playground
- Swings
- Walking Path
- Fitness
- Benches
- Trees
- Grass



# What is the most important park feature to you?

# Which main park activity is most important to you?

- Open space for grass areas and walking paths
- Playground for 2-5 year age
- Playground for 5-12 year age
- Playground for 2-5 and 5-12 year age
- Fitness Equipment
- ½ Court Basketball
- Shade Structure







VILLA MINI PARK / Playground 2-5 Age Range



City of Mountain View







VILLA MINI PARK / Playground 5-12 Age Range



City of Mountain View















VILLA MINI PARK / Shade Structure





# What main park activity is most important to you?

Open space & walking paths

Playground for 2-5 year age

Playground for 5-12 age

Playground for 2-5 and 5-12 year age

Fitness stations

Half court basketball

Shade Structure

# Do you want a themed park?

Yes or No

## Theme Examples:

Nature

Historical

Modern

Agriculture

Nautical

Other?



















# Do you want the park to have a theme?

Yes

No

# What theme would you like to see?



# Which type of play equipment do you prefer?

You will have two choices

- Post and Platform
- Free-standing / Independent Play
- Climbing net
- Swings
- Slides
- Spinning
- Music





VILLA MINI PARK / Post and Platform Structure



City of Mountain View







VILLA MINI PARK / Freestanding Play



City of Mountain View

























# Which type of play equipment do you prefer? First choice is...

Post and platform

Free-standing / Independent play

Climbing net

Swings

Slides

Spinning Play

Music



# Which type of play equipment do you prefer? Second choice is...

Post and platform **A**

Free-standing / Independent play **B**

Climbing net **C**

Swings **D**

Slides **E**

Spinning Play **F**

Music **G**



# Thoughts & Discussions





# What's next...

## 1. What will we do with this information?

- Based on your input, we will prepare three conceptual designs for the park and present them at Community Meeting #2
- The final Conceptual Design will be presented to the Parks & Recreation Commission.

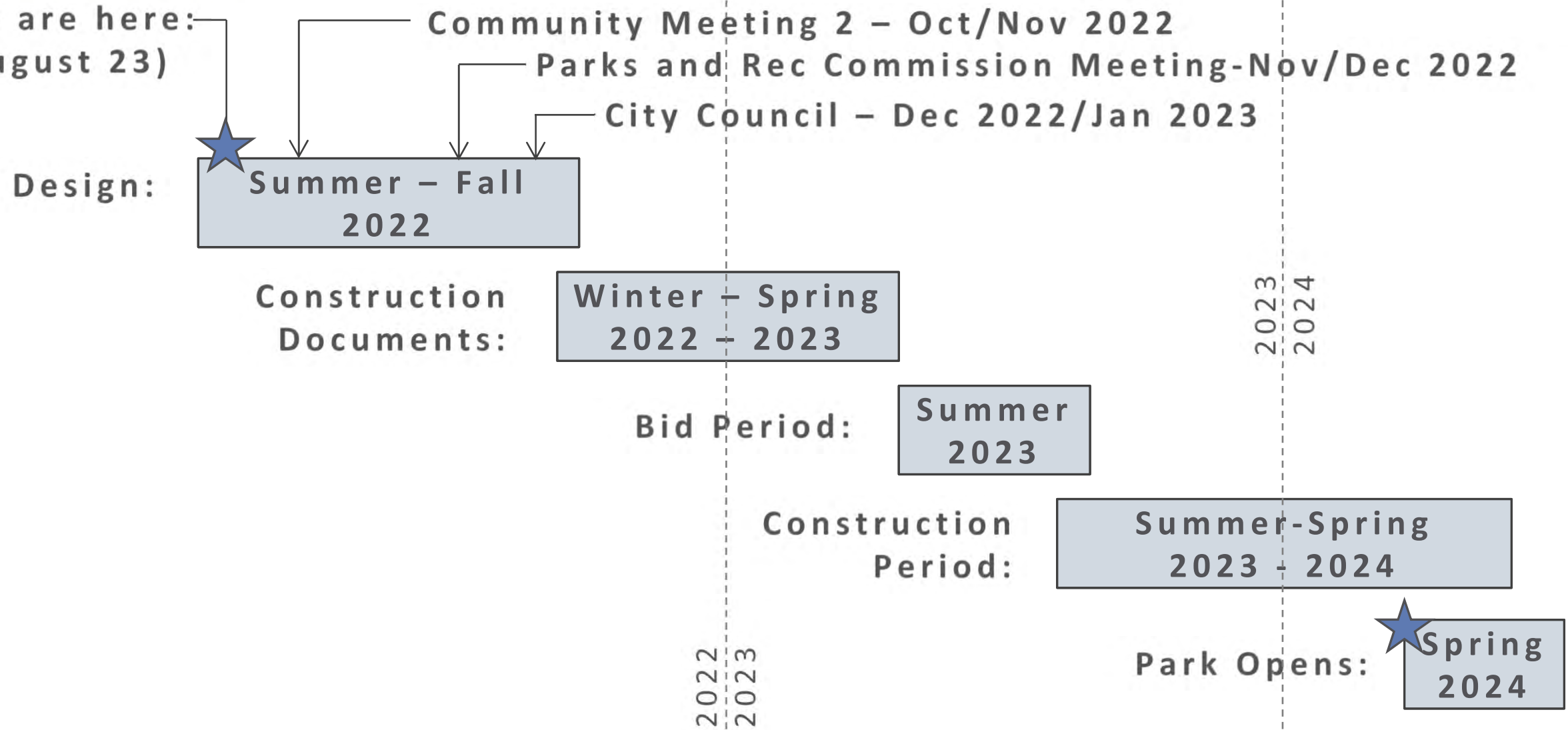
## 2. When is our next opportunity for feedback?

- Community Meeting #2 to be scheduled (Tentatively Oct/Nov 2022)



# SCHEDULE

We are here:  
(August 23)





# Thank You!

<http://www.mountainview.gov/depts/pw/projects/highlights.asp>

Questions? Email: [faryal.saiidnia@mountainview.gov](mailto:faryal.saiidnia@mountainview.gov)  
Project Manager, City of Mountain View

