



Community Meeting

March 23, 2017

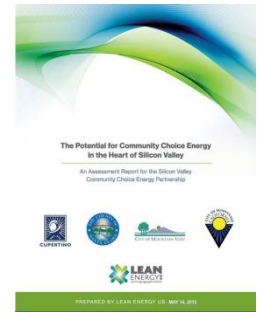
Steve Attinger

Environmental Sustainability Coordinator

Background on SVCE



- **Initial Discussions with Sunnyvale (July 2012)**
- **Silicon Valley Community Choice Energy Partnership (Feb 2015)**
 - Sunnyvale (lead), Mountain View, Cupertino, Santa Clara County
- **Initial Assessment Report (May 2015)**
 - High-level risks and benefits of forming a local CCE
 - 8 other communities then expressed interest
 - Campbell, Gilroy, Los Altos, Los Altos Hills, Los Gatos, Monte Sereno, Morgan Hill, Saratoga
- **Technical Feasibility Study (November 2015)**
 - Detailed study of regional energy needs, rate impacts, risks
- **Community Engagement in Mountain View (May 2015 – Jan 2016)**
 - 5 meetings to inform and gauge interest
 - City council approved participation in SVCE (January 2016)
- **Program Development (April 2016 – April 2017)**



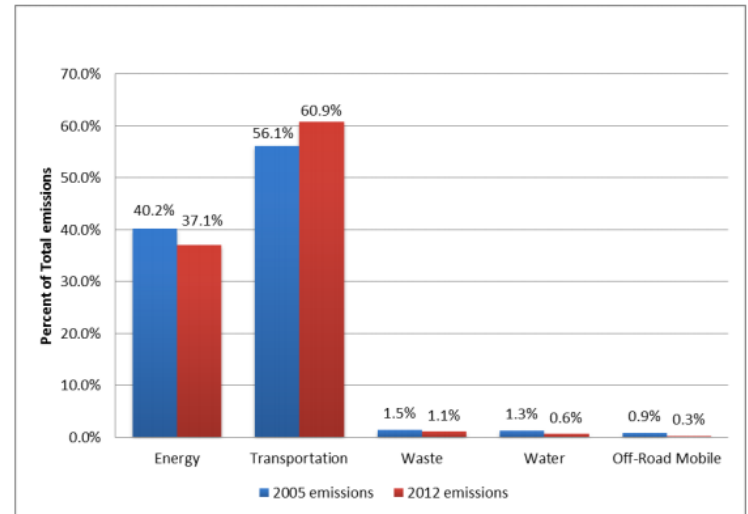
Mountain View's Carbon Emissions

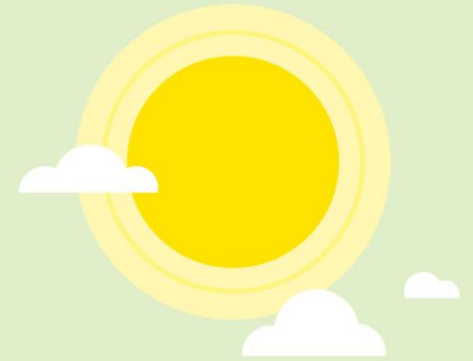
- Reduction Goal: “80% by 2050”

	2005	2012
Energy	40%	37%
Electricity	24%	21%

- SVCE is critical to meet our reduction goals
 - By 2020, SVCE is *estimated* to reduce:
 - Electricity emissions to 1%
 - Total emissions just below our 2005 baseline
- **But, our 2020 Goal is 15-20% below**
 - Significant community action is needed!

Figure 2.2: 2005 Baseline and 2012 Community Emissions by Sector (%)

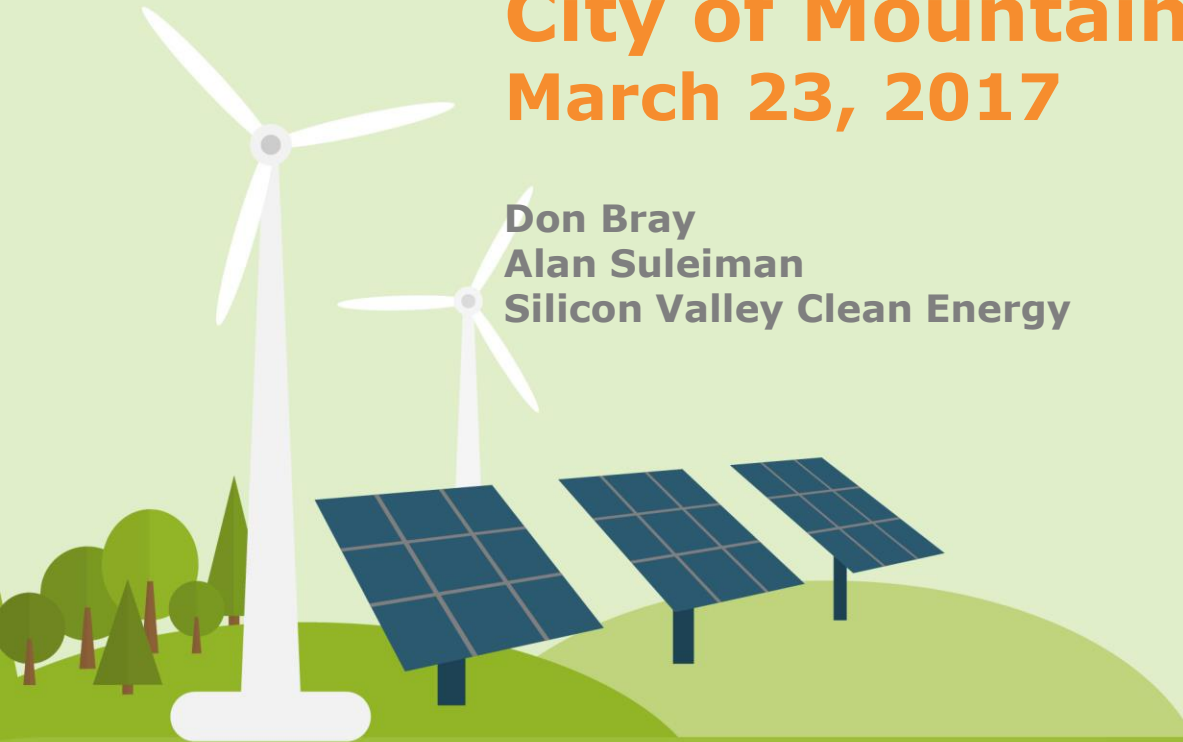




Community Choice Energy

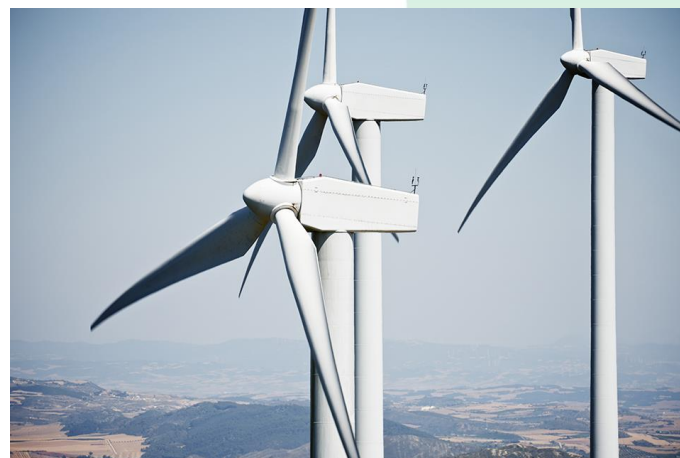
City of Mountain View March 23, 2017

Don Bray
Alan Suleiman
Silicon Valley Clean Energy



Overview

- Who is SVCE, and why was SVCE formed?
- How does Community Choice Energy work?
- What are my new energy choices with SVCE?
- What if I'm a NEM customer?
- Q&A



Introducing SVCE

- A new Community Choice Energy agency formed by 12 local communities to:
 - source cleaner electricity at more competitive rates
 - reduce carbon emissions and benefit the environment
 - offer new customer choices, and local economic benefits
- Service launches April 3rd!



How Does It Work?



SOURCE



SVCE

buying and
building energy
supplies

DELIVERY



PG&E

delivering energy,
repairing lines,
serving customers

CUSTOMER



YOU

benefitting from
cleaner energy,
local control

SVCE Organization and Governance

Serving approximately 220,000 residential and 20,000 commercial customers

Small full-time staff

Public board meetings take place monthly at 7pm on second Wednesdays, at Cupertino Community Hall



Rob Rennie, Chair
City of Los Gatos

Daniel Harney, Vice Chair
City of Gilroy

Liz Gibbons
City of Campbell

Rod Sinks
City of Cupertino

Jeannie Bruins
City of Los Altos

Courtenay Corrigan
Town of Los Altos Hills

Burton Craig
City of Monte Sereno

Steve Tate
City of Morgan Hill

Margaret Abe-Koga
City of Mountain View

Howard Miller
City of Saratoga

Jim Griffith
City of Sunnyvale

Dave Cortese
Santa Clara County

Where Did Community Choice Energy Come From?

- Authorized in California by AB 117 (Migden, 2002)
- Operational in seven states
- Participating communities join by ordinance, form Joint Powers Authority
- Register with PUC, file implementation plan
- More than one million residential and commercial customers in CA in 2017



Where Are The CCAs in CA Located?



Emerging Communities:

San Jose, Monterey County, Alameda County, Santa Barbara County, San Luis Obispo County and many others.



Enrollment

- Customers are automatically enrolled in a CCA program
- Customers can “opt out” to stay with PG&E’s bundled service
- Customers receive at least 4 notices (2 pre- and 2 post-enrollment)



Your electricity service is about to get a lot greener!

Silicon Valley Clean Energy (SVCE) will soon be your official electricity provider, bringing you **100% carbon-free electricity at lower rates than PG&E**. SVCE serves homes and businesses in *our* local community. Because there are no shareholders, we reinvest revenue right here to keep rates low and promote local green energy projects.

You're in!

 **GreenStart**
100% Carbon-Free

In **April 2017**, you'll be automatically enrolled in SVCE GreenStart—you don't need to do a thing. Or, you can choose to upgrade to GreenPrime, providing 100% renewable energy. You can also opt out to remain entirely with PG&E.

SVCleanEnergy.org

¡Su servicio de electricidad está a punto de ser mucho más verde!

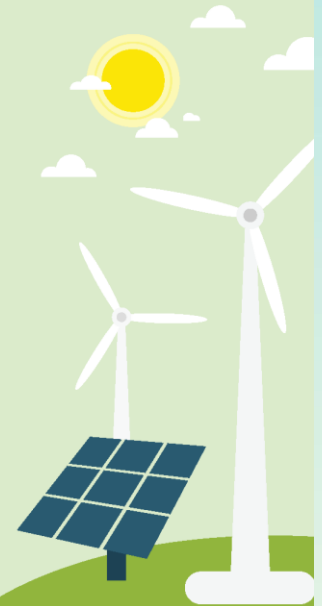
Electricidad 100% libre de carbono a precios más bajos que PG&E.

您的電力服務即將變得更加環保!

100% 無碳電力, 比PG&E更便宜



SVCleanEnergy.org



Electricity Choices



GreenStart

Your default option, 1% below comparable PG&E generation rates

- 100% carbon free
 - 50% renewable energy
 - 50% non-polluting hydroelectric energy



GreenPrime

Your voluntary option costs less than 1 penny more per kilowatt hour than GreenStart

- 100% renewable energy
- 100% carbon free

Sample Bill



ENERGY STATEMENT

www.pge.com/MyEnergy

Account No: 6632598009-3
Statement Date: 09/09/2015
Due Date: 09/30/2015

Service For:

Sparky Joule
123 Main Avenue
Los Altos, CA 94022

Questions about your bill?

24 hours per day, 7 days per week
Phone: 1-866-743-0335
www.pge.com/MyEnergy

Local Office Address

10900 N Blaney Avenue
Cupertino, CA 95014

Your Account Summary

Amount Due on Previous Statement	\$115.84
Payment(s) Received Since Last Statement	-115.84
Previous Unpaid Balance	\$0.00
Current PG&E Electric Delivery Charges	\$77.76
SVCE Electric Generation Charges	52.83
Current Gas Charges	16.22

Total Amount Due by 09/30/2015

\$146.81

Monthly Billing History

\$600
\$450

Daily Usage Comparison

1 Year Ago	Last Period	Current Period
27.03	17.96	20.06

Residential Rate Comparison

GreenStart	GreenPrime	Opt Out
50% RENEWABLE ENERGY	100% RENEWABLE ENERGY	33% RENEWABLE ENERGY
100% CARBON FREE	100% CARBON FREE	69% CARBON FREE
\$50.96 PG&E ELECTRIC DELIVERY	\$50.96 PG&E ELECTRIC DELIVERY	\$50.96 PG&E ELECTRIC DELIVERY
\$32.80 ELECTRIC GENERATION	\$36.68 ELECTRIC GENERATION	\$47.71 ELECTRIC GENERATION
\$14.43 PG&E ADDED FEES	\$14.43 PG&E ADDED FEES	\$0 PG&E ADDED FEES
\$98.19 AVERAGE TOTAL COST	\$102.07 AVERAGE TOTAL COST	\$98.67 AVERAGE TOTAL COST

Enrollment Phasing

April
2017



July
2017



Residential

20%

OF ACCOUNTS



Residential

100%

OF ACCOUNTS



**Small/Medium
Commercial**

100%

OF ACCOUNTS



**Large
Commercial**

100%

OF ACCOUNTS



Municipal

100%

OF ACCOUNTS



**Industrial &
Agriculture**

100%

OF ACCOUNTS

Net Energy Metering (Solar)



Retail Value for Surplus Generation

SVCE values net surplus generation at your full retail rate, a much better deal than the 3-4 cent wholesale rate paid by PG&E.



Monthly Billing with Credit Roll Over

We bill you monthly so you don't end up with a year's worth of charges in an annual true-up. Excess credits rollover month-to-month.



Automatic Annual Cash Out

Credit balances over \$100 for surplus generation are automatically paid to you in April of each year, up to a maximum of \$5,000.

Net Energy Metering (Solar)



Opportunity to Enroll in GreenPrime

Unlike with PG&E, SVCE NEM customers can ensure that when you do need additional electricity, it's sourced with 100% renewable energy—at an additional cost of only \$0.008/kWh.



Additional GreenPrime Value for Surplus Generation

Upgrading to GreenPrime, SVCE's premium 100% renewable energy service, pays an additional \$0.008/kWh for net energy generation.

NEM (Solar) Enrollment Schedule

- Automatic enrollment with SVCE will be based on your annual NEM true-up date, as shown below:

If your NEM true-up month is:	Your scheduled SVCE enrollment date is:
February, March or April 2017	Phase 1 - April 2017
May, June or July 2017	Phase 2 - July 2017
August, September or October 2017	Phase 3 - October 2017
November or December 2017, or January 2018	Phase 4 - January 2018

- More info about SVCE's NEM program available at SVCleanEnergy.org/solar

Summary

- New options for clean, renewable electricity at **competitive** rates
- Helping your community take **a big and immediate step** to reduce carbon emissions
- A locally governed agency supporting **clean energy investment, innovation and transformation** here in Santa Clara County



SVCE - Where to Learn More



SVCleanEnergy.org



844-474-SVCE (7823)



Billing & Customer Service:
customerservice@svcleanenergy.org



General Info:
info@svcleanenergy.org



@SVCleanEnergy

