



**MOUNTAIN VIEW POLICE DEPARTMENT**

**ANNUAL REPORT**

**2015**

**TABLE OF CONTENTS**

MESSAGE FROM THE CHIEF .....	1
FACTS .....	2
ORGANIZATIONAL CHART, PERSONNEL, BUDGET, BEATS	
CRIME .....	5
PART 1, PART 2, VIOLENT CRIME, PROPERTY CRIME, ARRESTS, TRENDS	
TRAFFIC.....	11
COLLISIONS AND CITATIONS	
ACTIVITY OVERVIEW .....	13
CALLS FOR SERVICE, CONTACTS DEMOGRAPHICS, PROFESSIONAL STANDARDS, PROPERTY AND EVIDENCE, K-9, SPECIAL EVENTS, VOLUNTEERS	
COMMUNITY ENGAGEMENT .....	18

# MESSAGE FROM THE CHIEF MVPD

This annual report provides a statistical overview of the results the men and women of the City of Mountain View’s Police Department accomplished in fulfilling their mission in the calendar year 2015. It is my intent for this report to provide a means of transparency by sharing information about the department’s daily operations and to provide general awareness about crime and safety in the community. In addition to this annual statistical overview, I would encourage interested stakeholders to review the [City’s Policing Plan](#), which provides details on the goals, objectives, and initiatives the Department is undertaking to serve and protect Mountain View.



As police professionals, we are very mindful that while data can be useful in developing strategy and ensuring accountability, it does not reflect the impacts to the people who are victims of crime and tragedy. The data also cannot accurately quantify or describe the dedication, commitment and effort that are required from the members of your Police Department to be effective in keeping Mountain View safe. For this, I ask that you join me in thanking the men and women of the Mountain View Police Department for the results they deliver day in and day out.

MAX BOSEL

Police Chief

<b>Mission</b>	<b>Keeping Mountain View safe and tackling crime</b> through quality policing that <b>secures the trust and support</b> of the people we serve and protect.
<b>Values</b>	EXCEPTIONAL SERVICE   INTEGRITY   RESPECT
<b>Priorities</b>	SAFETY   PEOPLE   RESULTS

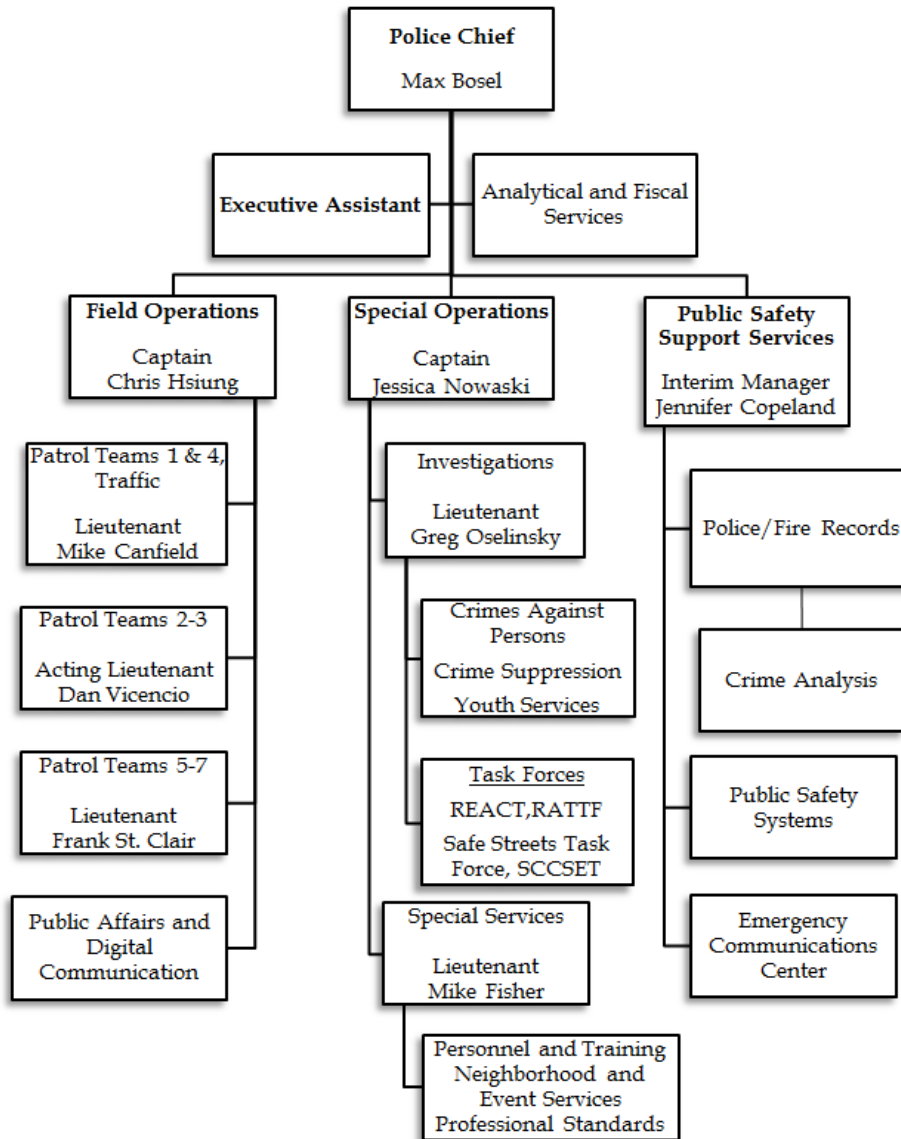
**Executive Leadership Team**

 <p><b>Captain Chris Hsiung</b></p>	 <p><b>Captain Jessica Nowaski</b></p>
--	--

# FACTS

# MVPD

## Organizational Chart



## Personnel Demographics

CLASSIFICATION	WHITE		BLACK		HISPANIC		ASIAN		TOTAL
	M	F	M	F	M	F	M	F	
<b>SWORN</b>	45	4	4	1	18	2	14	2	<b>90*</b>
PERCENTAGE	50.0	4.4	4.4	1.1	20.0	2.2	15.5	2.2	
ETHNICITY %	54.4		5.6		22.2		17.8		
<b>NON SWORN</b>	7	25	2	0	4	12	1	4	<b>55*</b>
PERCENTAGE	12.7	45.5	3.6	0	7.3	21.8	1.8	7.3	
ETHNICITY %	58.2		3.6		29.1		9.1		
<b>DEPT. TOTAL</b> (SWORN & NON SWORN)	52	29	6	1	22	14	15	6	<b>145</b>
PERCENTAGE (SWORN & NON SWORN)	35.9	20.0	4.1	.7	15.2	9.7	10.3	4.1	
ETHNICITY %	55.9		4.8		24.8		14.5		
MOUNTAIN VIEW CITY ETHNICITY %**	56.0		2.2		21.7		26.0		

\* Includes hourly and regular part-time positions. Full Time Equivalent (FTE) budgeted positions =141 (96 Sworn, 45 non-sworn). \*\*City of Mountain View ethnicity data source: 2010 U.S. Census Bureau (also includes 1% reported as Native American, Native Alaskan, Native Hawaiian, and Pacific Islander)

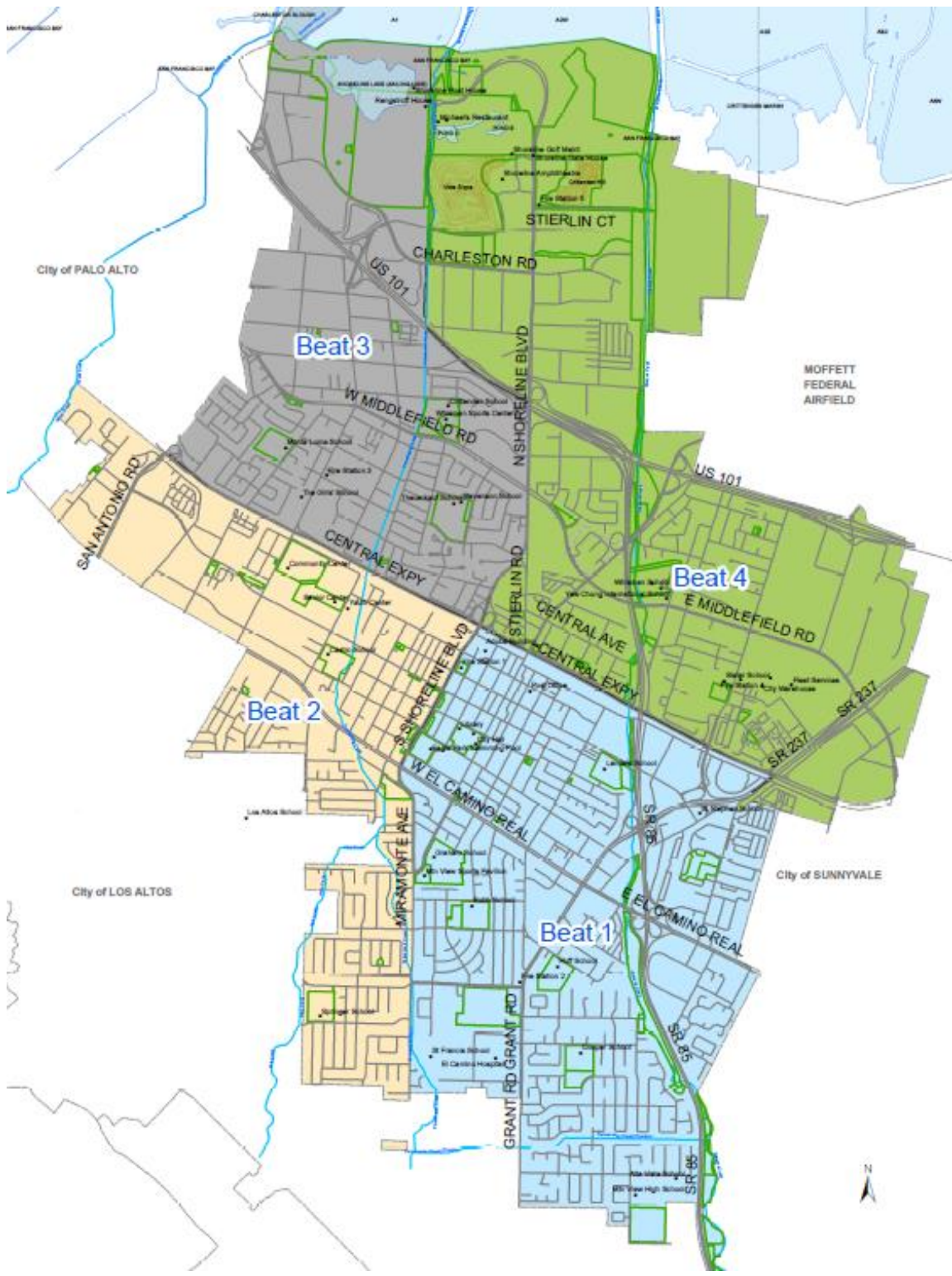
## Budget

DEPARTMENT PROGRAMS	2014-2015 ADOPTED	2015-2016 ADOPTED
POLICE ADMINISTRATION	\$ 1,308,529	\$ 1,399,048
FIELD OPERATIONS	16,925,684	18,169,930
INVESTIGATIVE SERVICES	7,602,072	7,709,931
PUBLIC SAFETY SUPPORT SERVICES	6,295,381	6,697,843
	<b>\$ 32,131,166</b>	<b>\$ 33,976,752</b>

EXPENDITURES SUMMARY	2014-2015 ADOPTED	2015-2016 ADOPTED
SALARIES, WAGES, AND BENEFITS	\$ 29,007,454	\$ 30,865,340
SUPPLIES AND OTHER SERVICES	2,241,712	2,233,012
CAPITAL OUTLAY	147,200	130,500
INTERFUND EXPENDITURES	735,300	747,900
	<b>\$32,131,666</b>	<b>\$ 33,976,752</b>



# Beats



# CRIME

# MVPD

In 2015, Mountain View's overall reported crime increased, in particular property crimes. While the causes of changes to crime rates can be debated, industry discussions take note about the corresponding changes in law following the passage of Proposition 47 in November 2014, which has significantly modified the way in which law enforcement and the criminal justice system addresses theft, shoplift burglaries, possession of stolen property and guns, and drug possession offenses. Our strategies to prevent and suppress crime are adapting to these changes, which has made holding offenders to account more challenging.

## Reported Crime

PART I CRIMES	2015	2014	+/-	PART II CRIMES	2015	2014	+/-
CRIMINAL HOMICIDE	0	1	-100%	SIMPLE ASSAULT	292	299	-2%
FORCIBLE RAPE	6	10	-40%	FORGERY	15	9	67%
RAPE - FBI REVISED DEFINITION	6	2	200%	FRAUD	144	102	41%
ROBBERY	31	29	7%	EMBEZZLEMENT	12	8	50%
AGGRAVATED ASSAULT	123	114	8%	STOLEN PROP - BUY/POSS/REC	22	21	5%
BURGLARY [1]	327	263	24%	VANDALISM	233	205	14%
LARCENY [2]	1564	1237	26%	WEAPON - CARRY / POSSESS	23	47	-51%
MOTOR VEHICLE THEFT	143	108	32%	PROSTITUTION / VICE	1	0	100%
ARSON	7	6	17%	SEX OFFENSE	56	52	8%
<b>PART I TOTAL</b>	<b>2,207</b>	<b>1,770</b>	<b>25%</b>	DRUG ABUSE	362	406	-11%
				OFFENSE AGAINST FAMILY & CHILD	16	20	-20%
[1] BURGLARY INCLUDES:				D U I	338	267	27%
RESIDENTIAL	162	118	37%	LIQUOR LAWS	11	22	-50%
COMMERCIAL	166	145	14%	PUBLIC INTOXICATION	343	334	3%
				DISORDERLY CONDUCT	15	13	15%
[2] LARCENY INCLUDES:				CITY ORDINANCE	190	233	-18%
AUTO BURGLARY OVER \$400	284	157	81%	OTHER OFFENSES	621	561	11%
AUTO BURGLARY UNDER \$400	191	142	35%	<b>PART II TOTAL</b>	<b>2,694</b>	<b>2,599</b>	<b>4%</b>
OTHER THEFT OVER \$400	446	325	37%	<b>GRAND TOTAL</b>	<b>4,901</b>	<b>4,369</b>	<b>12%</b>
OTHER THEFT UNDER \$400	643	613	5%				

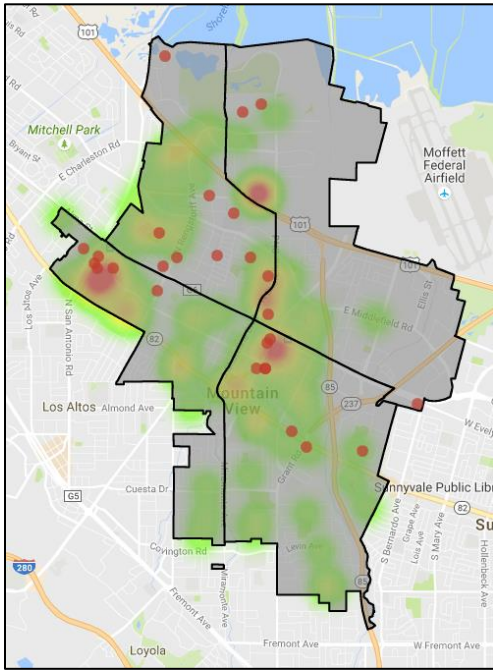
**Violent Crimes include:** Criminal Homicide, Forcible Rape, Robbery, and Aggravated Assault.

**Property Crimes include:** Burglary, Larceny over \$400, Motor Vehicle Theft, and Arson.

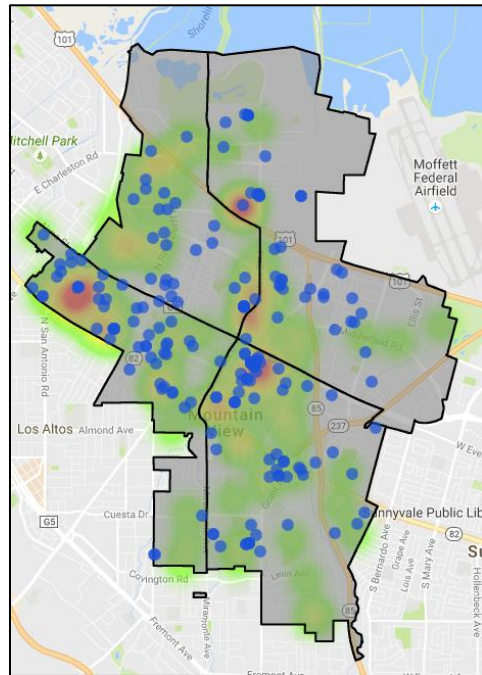
PART 1 CRIME RATE	2015	2014	% CHANGE
VIOLENT CRIMES	2.05	1.98	4%
PROPERTY CRIMES	15.4	10.95	41%

*\*The state calculates the rate per 100,000 population. Mountain View Police Department calculates the rate based on 1,000 population. A crime rate is calculated by dividing the number of reported crimes by the total population; the result is multiplied by 1,000.*

### Violent Crimes

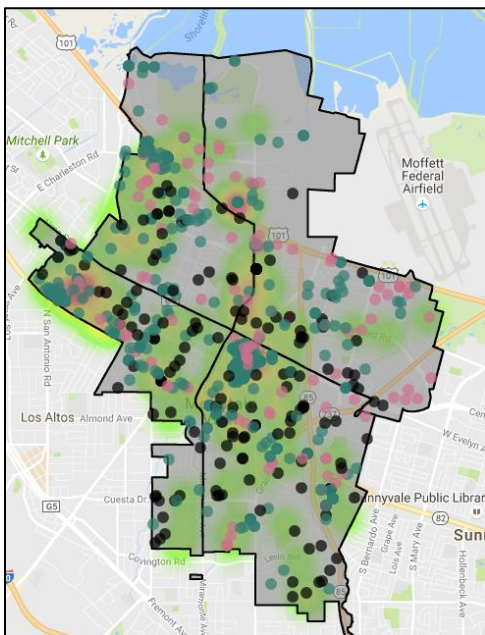


● ROBBERY

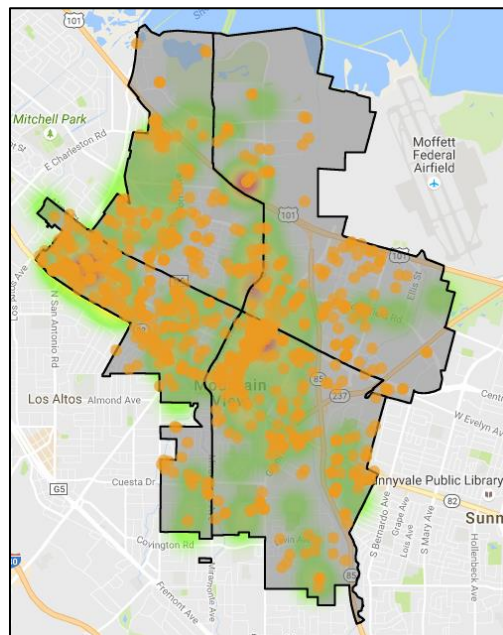


● ASSAULTS

### Property Crimes



● AUTO BURGLARY  
● COMMERCIAL BURGLARY  
● RESIDENTIAL BURGLARY



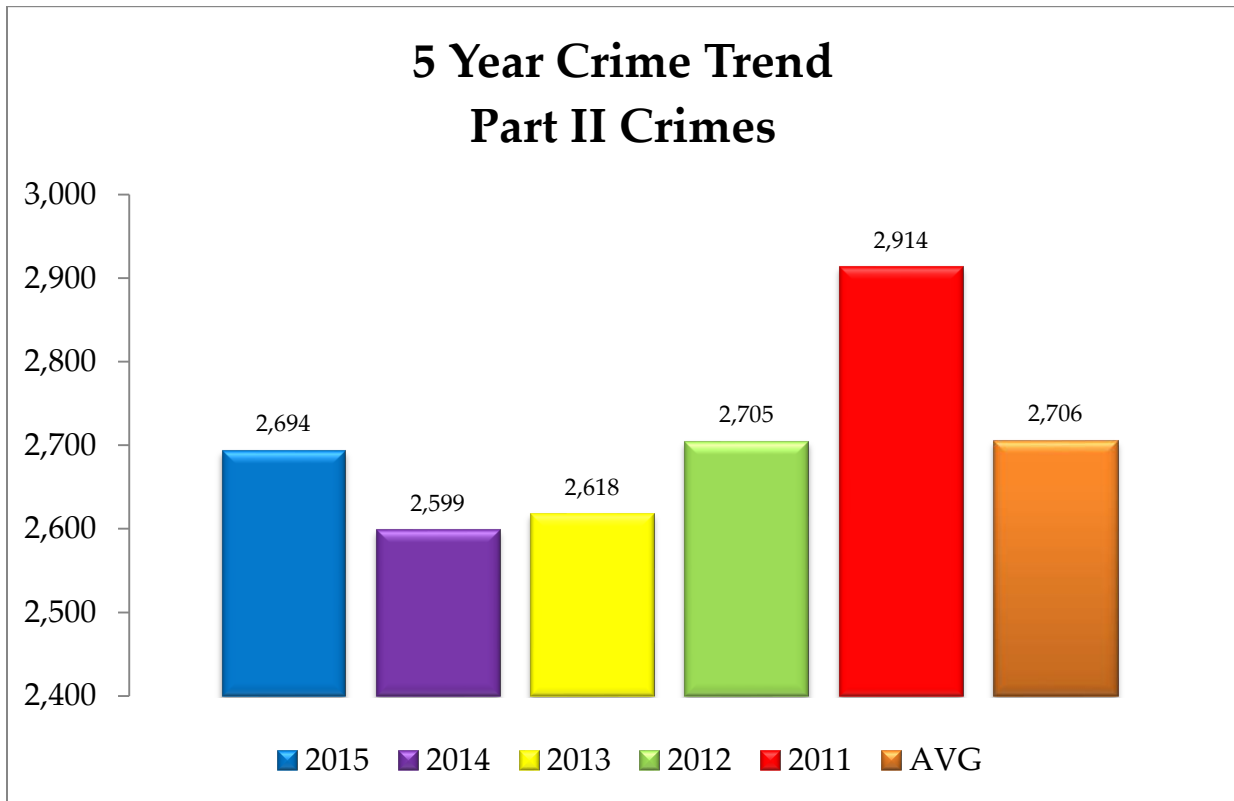
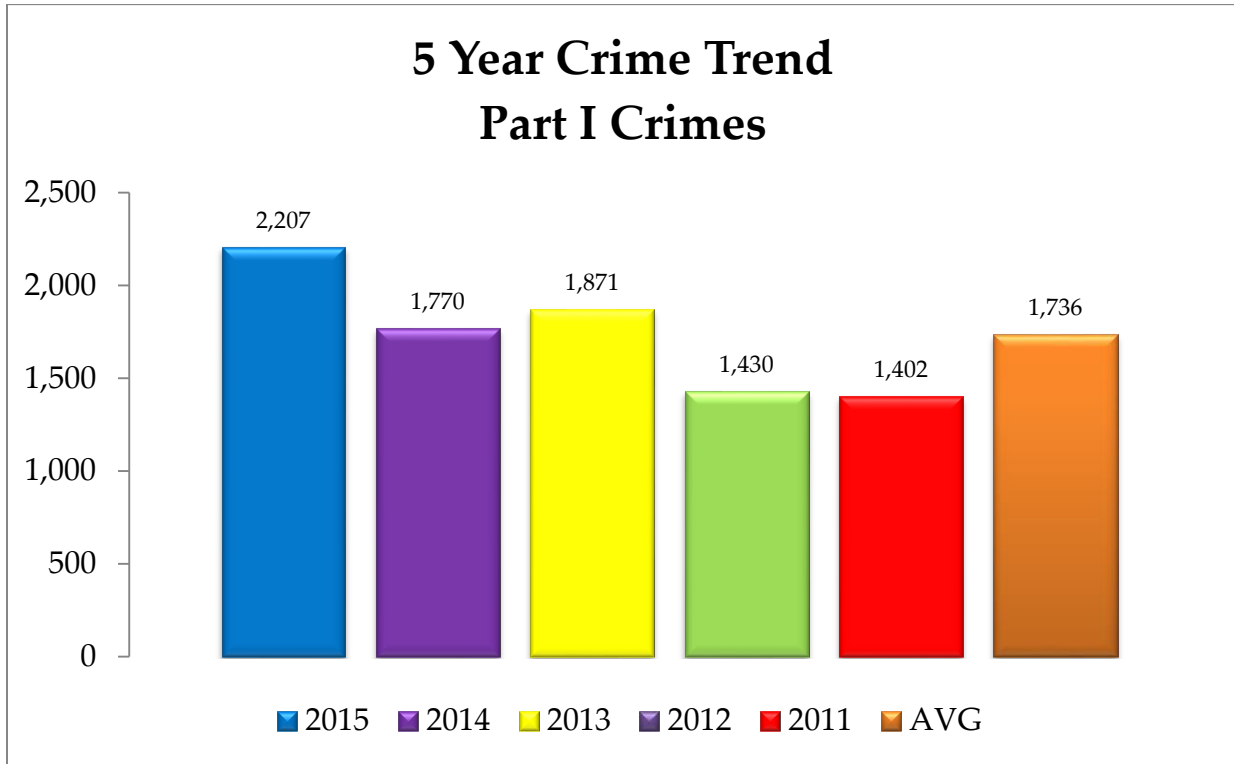
● THEFTS – GRAND & PETTY

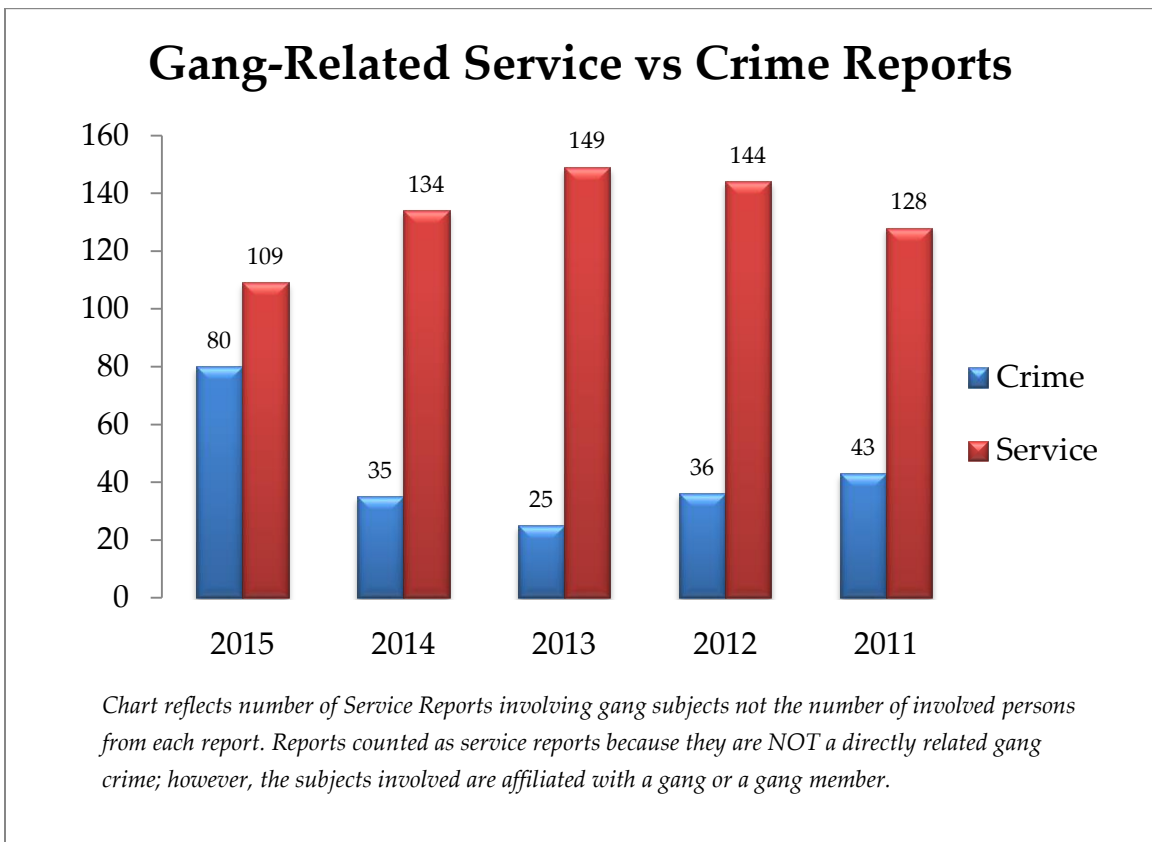
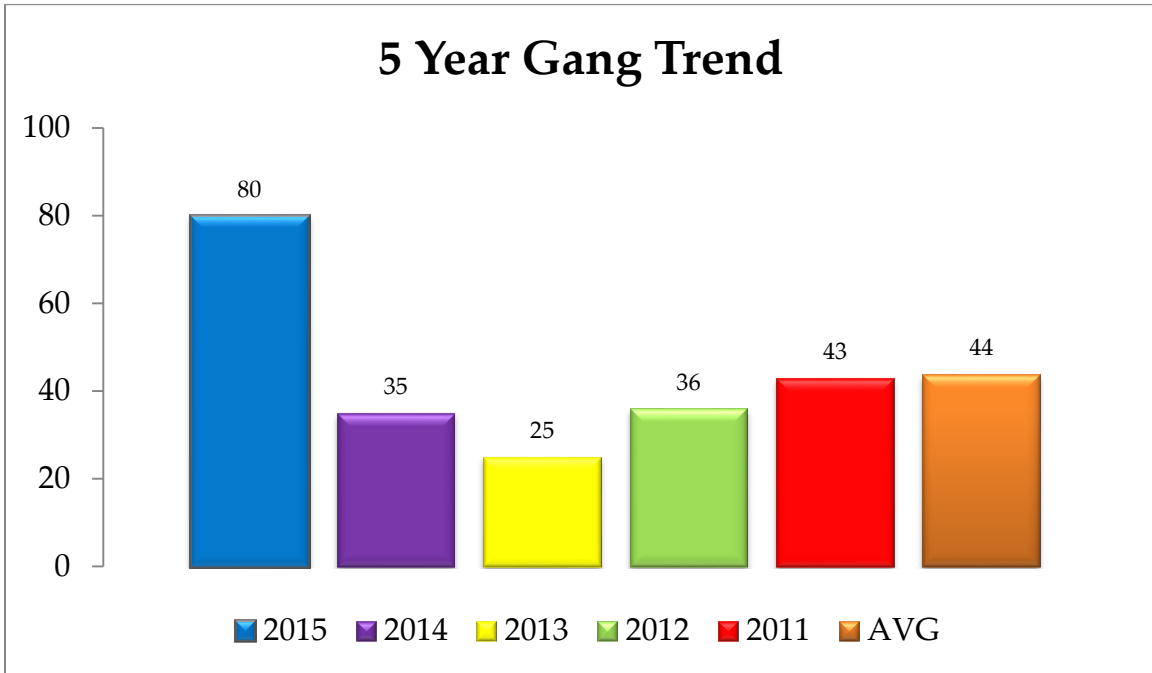


## 5 Year Crime Trend

<b>PART I</b>	<b>2015</b>	<b>2014</b>	<b>2013</b>	<b>2012</b>	<b>2011</b>	<b>AVG</b>
CRIMINAL HOMICIDE	0	1	0	0	0	0
FORCIBLE RAPE	6	10	8	5	6	7
RAPE - FBI REVISED DEFINITION	6	2	4	0	0	2
ROBBERY	31	29	33	33	37	33
AGGRAVATED ASSAULT	123	114	112	101	100	110
BURGLARY [1]	327	263	297	167	154	242
LARCENY [2]	1,564	1,237	1,277	1,022	1,014	1,223
MOTOR VEHICLE THEFT	143	108	135	95	88	114
ARSON	7	6	5	7	3	6
<b>PART I TOTAL</b>	<b>2,207</b>	<b>1,770</b>	<b>1,871</b>	<b>1,430</b>	<b>1,402</b>	<b>1,736</b>
[1] BURGLARY INCLUDES:						
RESIDENTIAL	162	118	183	106	82	130
COMMERCIAL	166	145	114	61	72	112
[2] LARCENY INCLUDES:						
AUTO BURGLARY OVER \$400	284	157	171	132	118	172
AUTO BURGLARY UNDER \$400	191	142	166	95	111	141
THEFT OVER \$400	446	325	420	345	260	359
THEFT UNDER \$400	643	613	520	450	525	550
<b>PART II</b>	<b>2015</b>	<b>2014</b>	<b>2013</b>	<b>2012</b>	<b>2011</b>	<b>AVG</b>
SIMPLE ASSAULT	292	299	240	263	260	271
FORGERY	15	9	17	17	20	16
FRAUD	144	102	112	75	97	106
EMBEZZLEMENT	12	8	10	8	6	9
STOLEN PROP - BUY/POSS/REC	22	21	63	35	18	32
VANDALISM	233	205	179	223	261	220
WEAPON - CARRY / POSSESS	23	47	35	30	33	34
PROSTITUTION / VICE	1	0	4	4	11	4
SEX OFFENSE	56	52	45	47	37	47
DRUG ABUSE	362	406	441	411	342	392
OFFENSE AGAINST FAMILY & CHILD	16	20	19	17	20	18
D U I	338	267	307	384	303	320
LIQUOR LAWS	11	22	26	24	22	21
PUBLIC INTOXICATION	343	334	259	289	289	303
DISORDERLY CONDUCT	15	13	12	5	6	10
CITY ORDINANCE	190	233	216	206	279	225
OTHER OFFENSES	621	561	633	667	910	678
<b>PART II TOTAL</b>	<b>2,694</b>	<b>2,599</b>	<b>2,618</b>	<b>2,705</b>	<b>2,914</b>	<b>2,706</b>
<b>GRAND TOTAL</b>	<b>4,901</b>	<b>4,369</b>	<b>4,489</b>	<b>4,135</b>	<b>4,316</b>	<b>4,442</b>
<b>SPECIAL CLASSIFICATIONS</b>	<b>2015</b>	<b>2014</b>	<b>2013</b>	<b>2012</b>	<b>2011</b>	<b>AVG</b>
OFFICERS ASSAULTED	10	18	8	17	11	13
DOMESTIC VIOLENCE	141	104	113	127	112	119
BIAS CRIME	0	0	0	0	1	0
ANTI-REPRODUCTIVE RIGHTS CRIME	0	0	0	0	0	0
<b>CRIME INDEXES</b> (PER 1,000 current year population)	<b>2015</b>	<b>2014</b>	<b>2013</b>	<b>2012</b>	<b>2011</b>	<b>AVG</b>
VIOLENT CRIME	2.05	1.98	1.96	1.78	1.84	1.92
PROPERTY CRIME	29.99	23.42	25.59	19.69	18.33	23.41







## Arrests and Clearances

<b>PART 1 CRIME CLEARANCES</b>	<b>2015</b>	<b>% CLEARED</b>	<b>2014</b>	<b>% CLEARED</b>
CRIMINAL HOMICIDE	0	0%	0	0%
FORCIBLE RAPE	5	83%	8	80%
RAPE - FBI REVISED DEFINITION	4	67%	1	50%
ROBBERY	14	45%	14	48%
AGGRAVATED ASSAULT	114	93%	64	56%
BURGLARY	50	15%	27	10%
LARCENY	233	15%	307	25%
MOTOR VEHICLE THEFT	10	7%	22	20%
ARSON	1	14%	7	117%*
<b>TOTAL</b>	<b>431</b>	<b>20%</b>	<b>450</b>	<b>25%</b>

*\*Represents clearances from crimes in 2014 and prior years.*

<b>JUVENILE ARRESTS</b>	<b>2015</b>	<b>2014</b>	<b>% CHANGE</b>
FELONY	24	54	-56%
MISDEMEANOR	107	201	-47%
WARRANTS/HOLDS	5	21	-76%
<b>TOTALS</b>	<b>136</b>	<b>276</b>	<b>-51%</b>
<b>ADULT ARRESTS</b>			
FELONY	334	610	-45%
MISDEMEANOR	1,186	1,397	-15%
WARRANTS/HOLDS	322	329	-2%
<b>TOTALS</b>	<b>1,842</b>	<b>2,336</b>	<b>-21%</b>
<b>ARRESTS GRAND TOTAL</b>	<b>1,978</b>	<b>2,612</b>	<b>-24%*</b>
<b>ARREST RATE**</b>			
FELONY	4.59	8.52	-46%
MISDEMEANOR	16.6	20.51	-19%
WARRANTS/HOLDS	4.2	4.49	-7%
<b>ARREST RATE TOTAL</b>	<b>25.39</b>	<b>33.52</b>	<b>-24%</b>

*\* The reduction in the number of arrests corresponds to law changes enacted by proposition 47 in November 2014.*

*\*\*An arrest rate describes the number of arrests made by law enforcement agencies per 1,000 total population. An arrest rate is calculated by dividing the number of reported arrests by the respective population; the result is multiplied by 1,000.*

# TRAFFIC

# MVPD

The number of injury collisions increased in 2015. This was, in part, due to including complaint of pain collisions in the number of injury collision reports. The community also had a significant increase in fatal collisions. The loss of life is tragic and the impact to the families of these victims and society at large cannot be understated. The department's efforts in traffic safety have included increased education and enforcement initiatives.

## Collisions

	2015	2014	% CHANGE
FATAL ACCIDENTS	6*	0	100%
INJURY ACCIDENTS	192	104	85%
PROPERTY DAMAGE REPORTS	276	101	173%
CITIZEN (COUNTER) REPORTS	19	12	58%
PRIVATE PROPERTY ACCIDENTS	26	18	44%
NAME EXCHANGE	[282]		
<b>TOTAL ACCIDENTS</b>	<b>519</b>	<b>235</b>	<b>121%</b>

*\*In memory of Robert Schwehr, Karl Holladay, Eric Palmquist, Walter Castellon-Alvarenga,*

*Peter Huynh and Michelle Montalvo.*







## Traffic Citations

VIOLATIONS	2015	2014	% CHANGE
SPEEDING	389	1073	-64%
FOLLOWING TOO CLOSE	7	16	-56%
STARTING, BACKING, UNSAFELY	10	9	11%
STOP SIGN-DISREGARD	292	563	-48%
REGULATORY SIGN-DISREGARD	837	2305	-64%
SIGNAL-DISREGARD	258	677	-62%
ROADWAY-FAILURE TO DRIVE ON RIGHT	122	413	-70%
TURNING UNSAFELY OR IMPROPERLY	51	93	-45%
FAILURE TO YIELD @ INTERSECTION	57	95	-40%
FAILURE TO YIELD NOT @ INTERSECTION	20	19	5%
PASSING-UNSAFELY OR IMPROPERLY	3	5	-40%
OTHER MOVING VIOLATIONS	556	722	-23%
<b>TOTAL MOVING VIOLATIONS</b>	<b>2,602</b>	<b>5,990</b>	<b>-57%</b>
EQUIPMENT-UNSAFE	412	623	-34%
CHILD RESTRAINT VIOLATION	10	13	-23%
SEAT BELT VIOLATION	131	189	-31%
WIRELESS DEVICE VIOLATION	755	1012	-25%
VEHICLE REGISTRATION	578	860	-33%
DRIVERS LICENSE VIOLATION	313	659	-53%
FINANCIAL RESPONSIBILITY	247	636	-61%
<b>TOTAL NON-MOVING VIOLATIONS</b>	<b>2,446</b>	<b>3,992</b>	<b>-39%</b>
BICYCLE VIOLATION	18	13	38%
PEDESTRIAN VIOLATION	22	40	-45%
<b>TOTAL - PED/BICYCLE VIOLATIONS</b>	<b>40</b>	<b>53</b>	<b>-25%</b>
PARKING-UNSAFE OR IMPROPER	3,923	4,800	-18%
PARKING-TIME LIMIT	2,810	4,900	-43%
<b>TOTAL PARKING VIOLATIONS</b>	<b>6,733</b>	<b>9,700</b>	<b>-31%</b>
<b>TOTAL VIOLATIONS</b>	<b>11,821</b>	<b>19,735</b>	<b>-40%</b>

# ACTIVITY OVERVIEW

MVPD

Members of the Mountain View Police Department have been working hard on a myriad of endeavors that affect crime, the fear of crime and overall safety in Mountain View, including workplace safety, terrorism, crisis intervention, school safety, traffic safety, cybercrime, drugs and addiction, DUI, crime prevention, organized crime and gangs, homelessness, domestic violence, victim services, youth services, and more.

Internally we have focused on continuous improvement, planning for the future, preparing personnel with a commitment to progressive training and incentives for higher education, and building relationships and strengthening partnerships with other agencies and organizations that have a collective interest in Mountain View's safety. We are taking a proactive approach to ensuring we meet the community's expectation for meeting the demands of a progressive and professional organization by using the [City's Policing Plan](#) as a framework for our planning, strategies, and operations.



### Calls For Service

BEAT	DISPATCHED CALLS	% CHANGE FROM 2014	OFFICER INITIATED CALLS	RESPONSE TIMES	
				AVERAGE	MEDIAN
1	7,006	12.96%	6,430	15.9	8.0
2	5,619	7.31%	4,407	15.6	8.5
3	3,466	11.13%	3,531	15.1	8.3
4	3,470	-1.36%	4,887	16.0	8.4
OUT OF CITY	103	-27.97%	90	-	-
UNSPECIFIED	-	-	1,553	-	-
<b>TOTAL</b>	<b>19,664</b>	<b>.08%</b>	<b>20,898</b>	<b>15.7</b>	<b>8.5</b>

*The response time to emergency and priority 1 calls was 4 minutes or less 55.8% of the time.*

### Contacts Demographics

RACE	VICTIMS	WITNESSES	SUSPECTS	ARRESTS	CITATIONS	ALL CONTACTS
WHITE	1,311	283	327	818	1,744	4,483
ASIAN	576	100	81	194	1,235	2,186
HISPANIC OR LATINO	575	233	378	1,066	872	3,124
BLACK OR AFRICAN AMERICAN	101	50	254	221	155	781
NATIVE AMERICAN, NATIVE ALASKAN	2	0	0	2	11	15
NATIVE HAWAIIAN, PACIFIC ISLANDER	10	8	9	19	12	58
OTHER NOT REPORTED ON CENSUS	55	16	10	36	425	542
<b>TOTAL</b>	<b>2,630</b>	<b>690</b>	<b>1,059</b>	<b>2,356</b>	<b>4,454</b>	<b>11,189</b>

**2010 U.S. census population: 74,066**

WHITE	56%	49.85%	41.01%	30.88%	34.72%	39.16%	40.07%
ASIAN	26%	21.9%	14.49%	7.65%	8.23%	27.73%	19.54%
HISPANIC OR LATINO*	21.7%	21.86%	33.77%	35.69%	45.25%	19.58%	27.92%
BLACK OR AFRICAN AMERICAN	2.2%	3.84%	7.25%	23.98%	9.38%	3.48%	6.98%
NATIVE AMERICAN, NATIVE ALASKAN	.5%	0.08%	0.00%	0.00%	0.08%	0.25%	0.13%
NATIVE HAWAIIAN, PACIFIC ISLANDER	.5%	0.38%	1.16%	0.85%	0.81%	0.27%	0.52%
OTHER NOT REPORTED ON CENSUS	N/A	2.09%	2.32%	0.94%	1.53%	9.54%	4.84%

*The analyzed data aggregates Police Department race/ethnicity reporting categories into US Census categories. Race or ethnicity is reported for involved parties listed on incident reports and citations. Contacts where race was unknown or left blank (such as in some cases reported by the public on the Internet), were not included in the totals. Victim contacts do not include businesses. The race or ethnicity for suspects can be for named individuals or for unknown suspects described by victims or witnesses. Arrests include persons arrested on criminal charges, warrants, and probation/parole holds. The "All Contacts" category includes parties classified as "Other," which is not reported separately in the table.*

*\*Hispanics may be of any race, so also are included in applicable race categories.*

## Professional Standards

The Mountain View Police Department is committed to providing exceptional service with integrity, and treating people with respect. The challenges of policing and the authority of police officers requires careful checks and balances to ensure members of the organization perform their duties lawfully, within policy, and with the openness to continuously improve. The department's Professional Standards Unit leads this endeavor by fielding complaints, investigating alleged misconduct, conducting organizational audits, and reviewing pursuits and uses of force. In September 2015, the Department fully implemented an Officer Worn Camera program in Field Operations. This program is intended to provide officers with a means to preserve their actions and provide transparency into enforcement and investigatory actions.

USE OF FORCE	INJURY					TOTALS
	NONE	MINOR	MODERATE	MAJOR	FATALITY	
CONTROL HOLD	6	4	0	0	0	10
PERSONAL WEAPON	4	1	0	0	0	5
UNCONTROLLED TAKEDOWN	7	3	0	0	0	10
OC (PEPPER SPRAY)	0	0	0	0	0	0
BATON / BEAN BAG ROUND	0	0	0	0	0	0
CED* (TASER)	10	1	0	0	0	11
K-9	0	0	0	0	0	0
RAMMING WITH VEHICLE	0	0	0	0	0	0
CAROTID RESTRAINT	0	0	0	0	0	0
FIREARM	0	0	0	0	0	0
<b>TOTAL*</b>	<b>27</b>	<b>9</b>	<b>0</b>	<b>0</b>	<b>0</b>	<b>36</b>

*\*In 2015, force was used on 29 individuals for a total of 36 uses of force (in some cases, more than one type of force was used on one person). In 2014, force was used on 40 separate individuals. All incident of force used are reviewed by the department's chain of command.*

PURSUIITS	TOTALS
INITIATED	8
APPREHENDED	3
COLLISIONS	0
INJURIES-SUSPECTS	0
INJURIES-CITIZENS	0
IN POLICY	7
NOT IN POLICY	1

PERSONNEL COMPLAINTS	TOTALS
SUSTAINED	3
UNFOUNDED	0
NOT SUSTAINED	1
EXONERATED	0
NO FINDING	1
PENDING	1
<b>TOTAL</b>	<b>6</b>



PROPERTY AND EVIDENCE	
ITEMS BOOKED	13,198
ITEMS PROCESSED	6,123

GUNS	
SAFEKEEPING	43
EVIDENCE	46
FOUND	3
DESTRUCTION	30
<b>TOTAL</b>	<b>122</b>



CASE REPORTS	8,156
CITATIONS	4,507
FIELD INTERVIEW CARDS	212
CLETS TRANSACTIONS	2,787
WARRANTS	899
<b>TOTAL</b>	<b>16,561</b>
<b>CASES FILED WITH DA</b>	<b>997</b>

K-9	
TRAINING HOURS	353
DEPLOYMENTS	321
EVIDENCE/ARTICLE FINDS	6
SUSPECT APPREHENSIONS	4
OUTSIDE AGENCY ASSISTS	16
NARCOTIC FINDS (PATROL)	9



Odin is the youngest K9 on the team. He is assigned to Officer Dorene Hansen on Patrol Team 4.

<b>SWAT DEPLOYMENTS</b>	<b>2</b>
-------------------------	----------

SPECIAL EVENTS		
SHORELINE CONCERTS	37	* Miscellaneous events include events at St. Francis High School, Mountain View High School, Thursday Night Live, OBON, Spring Parade, Art & Wine, and A La Carte & Art.
PRIVATE HIRE	5	
MISCELLANEOUS*	43	
RESERVE OFFICER HOURS	4,754.95	



VOLUNTEER AND EXPLORERS*	
*Hours compared to 1 Full Time Employee (FTE) with 2,080 hours	
EVENTS ATTENDED	13
VOLUNTEER HOURS	455.75 (22% of FTE)
EXPLORER HOURS	1,332.50 (64% of FTE)
<b>Total Hours</b>	<b>1,785.25 (86% of FTE)</b>

# COMMUNITY ENGAGEMENT MVPD

Recognizing that police-community interactions often involve adversarial interactions, or stressful and unpleasant incidents, it is important to create opportunities for police officers and the people they serve to have encounters in positive environments. This serves to foster communication to share crime and safety concerns, as well as a shared perspective about the challenges of keeping Mountain View safe and tackling crime. Centric to this endeavor are the Department’s community engagement initiatives in neighborhoods, events, schools, and at the Police Department. The Department is expanding its initiatives through Coffee with a Cop, National Night Out, its partnership with the Police Activities League, continuing its active presence at established events and community functions and its industry leading outreach on social media.

## Outreach

EVENTS AND PRESENTATIONS-28	DOWNTOWN EVENTS-8
ICE CREAM SOCIALS-4	THURSDAY NIGHT LIVE-4
BLOCK PARTIES-8	ART AND WINE-2
SCHOOL VISITS-2	A LA CARTE AND ART-2
SCHOOL READINGS-1	<b>NEIGHBORHOOD WATCH MEETINGS-11</b>
LEMONADE STAND-3	BUSINESS-4
NATIONAL NIGHT OUT-1	RESIDENTIAL-3
OTHER-10	SENIOR-3 (65 people)
	LIBRARY-1 (26 people)
<b>Handled by Patrol, Youth Services Unit (YSU) and Neighborhood &amp; Event Services (NES)</b>	





Mountain View Police Activities League (PAL)	Mountain View PAL & YSU	MVPD Youth Services Unit (YSU)
49ER FOOTBALL CAMP-30	HOLIDAY HOSPITAL VISIT- 25	COPS THAT CARE- 1,400
COLLEGE TOUR- 8	CASTRO MENTORING- 20	DREAMS & FUTURES- 120
BASKETBALL- 12	GRAHAM MENTORING- 20	EXPLORERS CAMPING TRIP- 20
NET-GAIN TENNIS- 40	BOXING- 20	ASSIST WITH KIWANIS CHRISTMAS TREE LOT- 20 (Dreams & Future enrichment program)
DISNEYLAND TRIP- 8		

*The numbers include the number of youth served in specific programs it does not include the number of youth served by youth services during their daily calls for service.*



*New wrapping on the Mountain View PAL van courtesy of the Mountain View Public Safety Foundation.*



## Coffee with a Cop



## National Night Out



## Cops and Gobblers

(Organized by the Police Officers Association)





Facebook 14,937 followers

<https://www.facebook.com/mountainviewpolicedepartment>



Twitter 14,820 followers

<https://twitter.com/MountainViewPD>



Nixle 2,606 Subscribers

<http://local.nixle.com/mountain-view-police-department>



Mountain View Police Blog 184 Subscribers

<http://mountainviewpoliceblog.com>



Pinterest

<https://www.pinterest.com/mountainviewpd>



Nextdoor 9,130 members

<https://nextdoor.com>

ROBERT K. SCHATZ  
POLICE SERVICES - FIRE ADMINISTRATION BUILDING





 **ROBERT K. SCHATZ**   
**POLICE SERVICES-FIRE ADMINISTRATION BUILDING**

## CONTACT INFORMATION

For emergencies dial 9-1-1

Non-emergencies (650) 903-6395

### Tip Lines

*Narcotics:* call (650) 961-5800

*Crimes:* text MVTIPS to CRIMES (274637)

General Business (650) 903-6350

Monday - Friday

8 a.m. - 5 p.m.

Walk-in Crime Reports (650) 903-6344

7 days a week

7 a.m. - 7 p.m.

1000 Villa Street, Mountain View, CA 94041

[www.mvdpd.gov](http://www.mvdpd.gov)

